

**KD-Validated Anti-Somatostatin Receptor 5 Rabbit Monoclonal Antibody**  
**Rabbit monoclonal antibody**  
**Catalog # AGI1734****Specification**

---

**KD-Validated Anti-Somatostatin Receptor 5 Rabbit Monoclonal Antibody - Product Information**

Application	WB, FC, ICC
Primary Accession	<a href="#">P35346</a>
Reactivity	Rat, Human, Mouse
Clonality	Monoclonal
Isotype	Rabbit IgG
Calculated MW	Predicted, 39 kDa , observed , 42 kDa KDa
Gene Name	SSTR5
Aliases	SSTR5; Somatostatin Receptor 5; Somatostatin Receptor Type 5; SS-5-R; SST5; Somatostatin Receptor Subtype 5; SS5-R; SS5R
Immunogen	A synthesized peptide derived from human SSTR5

**KD-Validated Anti-Somatostatin Receptor 5 Rabbit Monoclonal Antibody - Additional Information**

Gene ID	6755
<b>Other Names</b>	
Somatostatin receptor type 5, SS-5-R, SS5-R, SS5R, SST5, SSTR5	

**KD-Validated Anti-Somatostatin Receptor 5 Rabbit Monoclonal Antibody - Protein Information****Name** SSTR5**Function**

Receptor for somatostatin 28 and to a lesser extent for somatostatin-14. The activity of this receptor is mediated by G proteins which inhibit adenylyl cyclase. Increases cell growth inhibition activity of SSTR2 following heterodimerization.

**Cellular Location**

Cell membrane; Multi-pass membrane protein.

**Tissue Location**

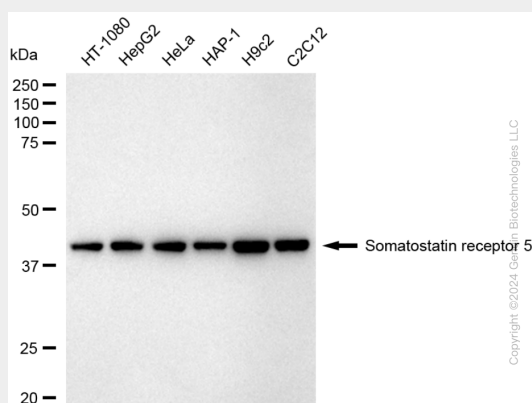
Adult pituitary gland, heart, small intestine, adrenal gland, cerebellum and fetal hypothalamus. No expression in fetal or adult kidney, liver, pancreas, uterus, spleen, lung, thyroid or ovary.

**KD-Validated Anti-Somatostatin Receptor 5 Rabbit Monoclonal Antibody - Protocols**

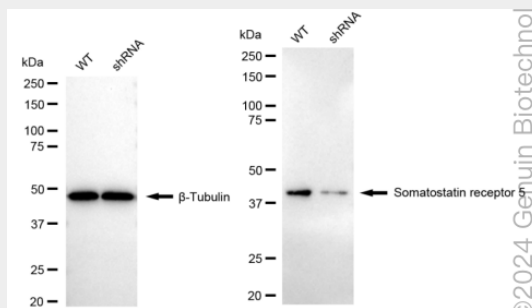
Provided below are standard protocols that you may find useful for product applications.

- [Western Blot](#)
- [Blocking Peptides](#)
- [Dot Blot](#)
- [Immunohistochemistry](#)
- [Immunofluorescence](#)
- [Immunoprecipitation](#)
- [Flow Cytometry](#)
- [Cell Culture](#)

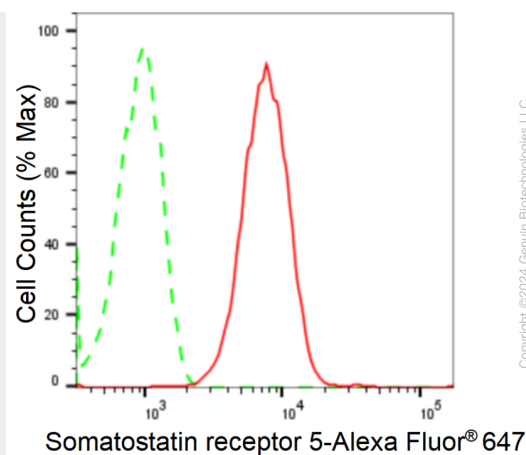
### KD-Validated Anti-Somatostatin Receptor 5 Rabbit Monoclonal Antibody - Images



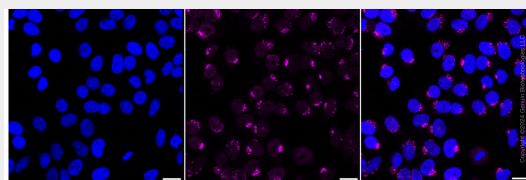
Western blotting analysis using anti-somatostatin receptor 5 antibody (Cat#AGI1734). Total cell lysates (5 µg) from various cell lines were loaded and separated by SDS-PAGE. The blot was incubated with anti-somatostatin receptor 5 antibody (Cat#AGI1734, 1:5,000) and HRP-conjugated goat anti-rabbit secondary antibody respectively.



Western blotting analysis using anti-Somatostatin receptor 5 antibody (Cat#AGI1734). Somatostatin receptor 5 expression in wild type (WT) and Somatostatin receptor 5 shRNA knockdown (KD) HeLa cells with 20 µg of total cell lysates. β-Tubulin serves as a loading control. The blot was incubated with anti-Somatostatin receptor 5 antibody (Cat#AGI1734, 1:5,000) and HRP-conjugated goat anti-rabbit secondary antibody respectively.



Flow cytometric analysis of Somatostatin receptor 5 expression in HepG2 cells using anti-Somatostatin receptor 5 antibody (Cat#AGI1734, 1:2,000). Green, isotype control; red, Somatostatin receptor 5.



Immunocytochemical staining of HepG2 cells with anti-Somatostatin receptor 5 antibody (Cat#AGI1734, 1:1,000). Nuclei were stained blue with DAPI; Somatostatin receptor 5 was stained magenta with Alexa Fluor® 647. Images were taken using Leica stellaris 5. Protein abundance based on laser Intensity and smart gain: High. Scale bar: 20  $\mu$ m.